

# **MAICO**

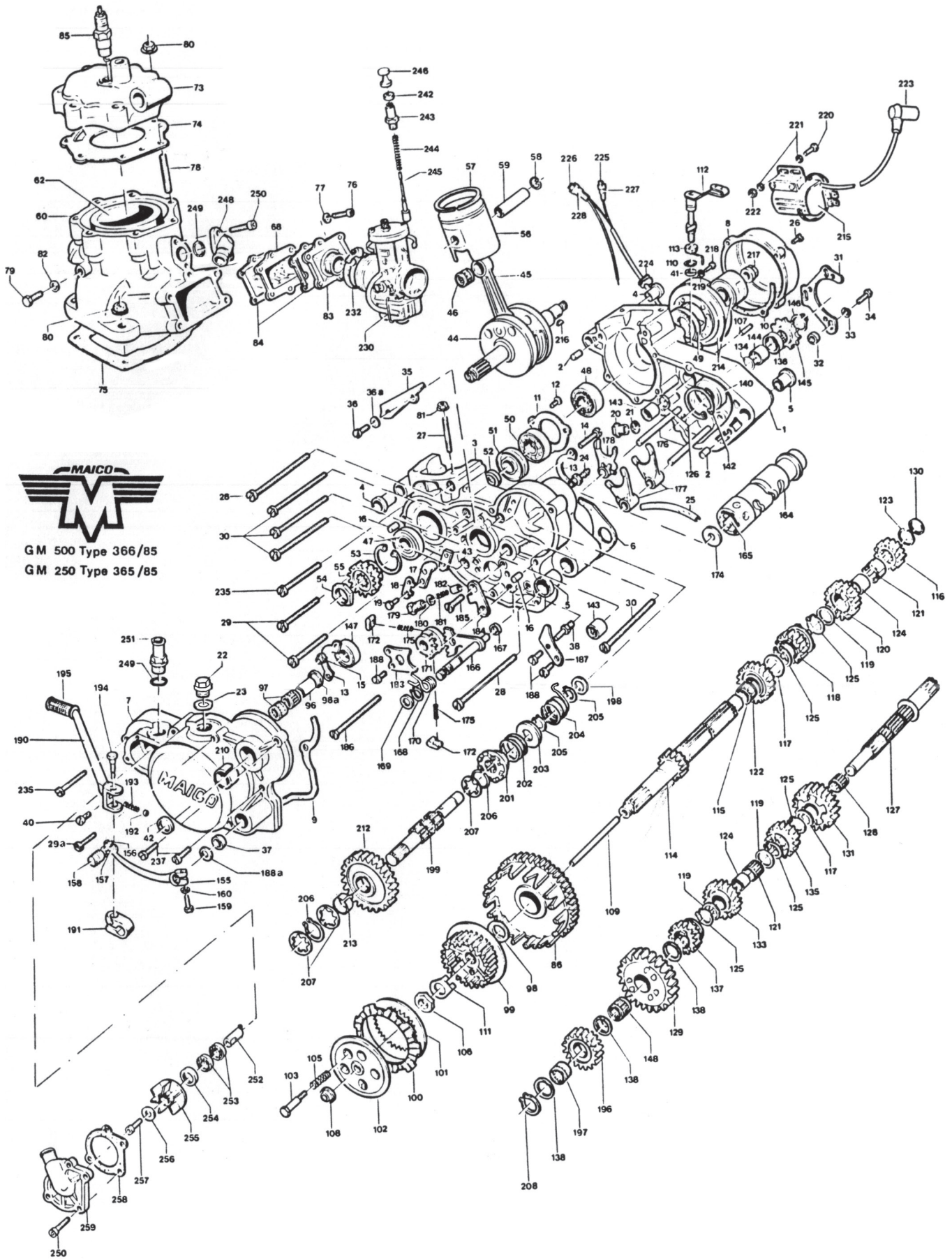
## **SPARE PARTS CATALOGUE**

**1985 GM STAR**

**ENGINE TYPE**

**250 - 365**

**500 - 366**



GM 500 Type 366/85  
GM 250 Type 365/85

**1985 Engine**

Picture No.	Part No.	Description	GM 250	GM 500	Picture No.	Part No.	Description	GM 250	GM 500
1	118955	Engine Case right	1	-	22	100408	Screw cap M 20 x 1,5 DIN 910	1	1
	119002	Engine Case right	-	1	23	100409	Seal ring 20 x 24 DIN 7603	1	1
2	101977	Inner ring	2	2	24	101985	Breather	1	1
3	118958	Engine case, left	1	-	25	100263	Breather tube	x	x
	119005	Engine case left	-	1	26	101536	Cylinder screw M 6 x 25 DIN 84	4	4
4	101995	Fixing bush	4	4	27	101772	Stud M 8 x 25 DIN 835	4	-
5	101994	Oscillant bush	2	2		101780	Stud M 10 x 39 DIN 835	-	4
6	118959	Engine case gasket	1	-	28	101545	Cylinder screw AM 6 x 80 DIN 84	2	3
	119009	Engine case gasket	-	1	29	101541	Cylinder screw AM 6 x 50 DIN 84	5	4
7	118960	Clutch cover	1	-	29a	101539	Cylinder screw AM 6 x 40 DIN 84	1	1
	119008	Clutch cover	-	1	30	101519	Cylinder screw AM 6 x 75 DIN 84	4	4
8	108568	Ignition case cover	1		31	108011	Bracket	1	1
9	118961	Clutch case gasket	1	1	32	108012	Spacer bush	3	3
10	101989	Ignition case gasket, right	1	1	33	101510	Spring ring B 6 DIN 128	3	3
11	101988	Bearing cover plate	1	1	34	101571	Hexagon screw M 6 x 30 DIN 931	3	3
12	101795	Countersunk screw M 5 x 8 DIN 965	3	3	35	108025	Oil guide plate	1	-
13	108008	Bearing cover plate	2	2		108031	Oil guide plate	-	1
14	101536	Cylinder screw M 6 x 25 DIN 84	2	2	36	101529	Cylinder screw AM 5 x 10 DIN 84	2	2
15	101690	Securing nut M 6 DIN 980	2	2	36a	101711	Spring washer B 5 DIN 137	2	2
16	101997	Inner ring	2	2	37	101865	Seal ring AS 12 x 22 x 7	1	1
17	108009	Washer	1	1	38	108014	Spring pin return sorina	1	1
18	108010	Flat washer	1	1	40	101526	Cylinder screw M 8 x 10 DIN 84	1	1
19	101569	Hexagon screw M 6 x 20 DIN 933	2	2	41	108175	Seal ring	1	1
20	100895	Magneto screw cap	1	1	42	101866	Sealing ring	1	1
21	100410	Seal ring A 14 x 18 DIN 933	2	2	43	108016	Stop plate	1	1

**1985 Engine**

Picture No.	Part No.	Description	GM 250	GM 500	Picture No.	Part No.	Description	GM 250	GM 500
44	108569	Crankshaft complete	1	-	108376	Piston Ø 67,97	1	-	
	119015	Crankshaft complete	-	1	106813	Piston Ø 86,44	-	1	
	104089	Crankshaft in exchange	1	-	106815	Piston Ø 86,64	-	1	
	119038	Crankshaft in exchange	-	1	106816	Piston Ø 86,84	-	1	
45	104086	Connecting rod repair kit	1	-	106817	Piston Ø 87,04	-	1	
	104088	Connecting rod repair kit	-	1	106818	Piston Ø 87,24	-	1	
46	108664	Needle bearing 0-2	1	1	106819	Piston Ø 87,44	-	1	
	108665	Needle bearing 2-4	1	1	57 100523	Piston ring Ø 67,00	1	-	
	108666	Needle bearing 4-6	1	1	106184	Piston ring Ø 67,20	1	-	
47	103795	Cylinder roller bearing NU 205 C 3	1	1	106187	Piston ring Ø 67,40	1	-	
48	100426	Cylinder roller bearing NU 305 C 3	1	1	102067	Piston ring Ø 67,60	1	-	
49	100469	Radial sealing ring 25 x 52 x 9	1	1	106189	Piston ring Ø 67,80	1	-	
50	100425	FAFNIR 305K Single Row Ball Roller 62MM 25MM 17MM Bearing DIN 625	1	1	106191	Piston ring Ø 68,00	1	-	
51	100547	Radialsealing ring	1	1	106814	Piston ring Ø 86,50	-	1	
52	108260	Inner ring 25 x 31,45x 17,5	1	-	106820	Piston ring Ø 86,70	-	1	
	108290	Inner ring 25 x 31,45x 13	-	1	106821	Piston ring Ø 86,90	-	1	
53	106305	Securing ring 52 x 2 DIN 472	2	2	106822	Piston ring Ø 87,20	-	1	
54	108571	Nut on crankshaft	1	1	106823	Piston ring Ø 87,30	-	1	
55	118800	Crankshaft sprocket	1	-	106824	Piston ring Ø 87,50	-	1	
	118802	Crankshaft sprocket	-	1	58 100536	Circlip	2	2	
56	108370	Piston Ø 66,97	1	-	59 108371	Wrist pan 18 x 13 x 50	1	-	
	108372	Piston Ø 67,17	1	-	100535	Wrist pin	-	1	
	108373	Piston Ø 67,37	1	-	60 118965	Cylinder complete	1	-	
	108374	Piston Ø 67,57	1	-	119018	Cylinder complete	-	1	
	108375	Piston Ø 67,77	1	-	119029	Cylinder complete in exchange	1	-	

**1985 Engine**

Picture No.	Part No.	Description	GM 250	GM 500	Picture No.	Part No.	Description	GM 250	GM 500
	119039	Cylinder complete in exchange	-	1	82	100407	Seal ring A 6 x 10	1	1
62	118967	Cylinder bush	1	-	83	118964	Intake flange	1	1
	119020	Cylinder bush	-	1	84	106810	Intake gasket	2	2
67	108298	Decompression valve complete	-	1	85	108691	Spark plug NGK B9 ES	1	1
68	106796	Reed valve complete	1	1	86	118805	Clutch housing complete	1	-
69	106797	Reed valve	1	1	87	108274	Clutch housing	1	-
70	106798	Reed valve tongue	2	2	88	101416	Countersunk rivet 6 x 22 DIN 661	6	-
71	106799	Reed valve stopf tongue	2	2	89	118801	Clutch pinion	1	-
72	101877	Oval head screw M 3 x 8 Z 4 DIN 7985	6	6	90	118806	Clutch housing complete	-	1
73	118968	Cylinder head	1	-	91	108096	Clutch housing	-	1
	119023	Cylinder head	-	1	92	108102	Rubber cushion	-	6
74	108575	Cylinder head gasket	1	-	93	118803	Clutch pinion	-	1
	119024	Cylinder head gasket	-	1	94	108077	Cover plate	-	1
75	108222	Cylinder base gasket 0,3 mm Thick	nB		95	101420	Countersunk rivet 6 x 30 DIN 661	-	6
	108223	Cylinder base gasket 0,5 mm Thick	nB		96	108276	Inner ring	1	1
	108224	Cylinder base gasket 0,7 mm Thick	nB		97	100736	Needle cage	2	2
	107462	Cylinder base gasket 0,3 mm Thick		nB	98	108277	Spacer bush	1	1
	107463	Cylinder base gasket 0,5 mm Thick		nB	98a	118969	Spacer bush	1	1
	107464	Cylinder base gasket 0,7 mm Thick		nB	99	108100	Clutch Body	1	1
76	101635	Inner hexagon screw M 6 x 25	6	6	100	108082	Outer disc	6	6
77	101510	Spring ring B 6 DIN 128	6	6	101	108083	Inner disc	6	6
78	108576	Stud	6	7	102	108084	Pressure plate	1	1
79	101506	Hexagon screw M 6 x 10	1	1	103	108105	Pressure bolt	5	5
80	118804	Flange nut M 8	11	7	105	108071	Spring	5	5
81	118859	flange nut M 10	-	4	106	108278	Hexagon nut 8 M 16 x 1 DIN 439	1	1

**1985 Engine**

Picture No.	Part No.	Description	GM 250	GM 500	Picture No.	Part No.	Description	GM 250	GM 500
107	108091	Needle roller	1	1	133	118977	3rd gear on output shaft	1	1
108	108087	Ball bearing	1	1	134	119036	O-ring seal	1	1
109	108089	Pressure rod	3	3	135	118976	4th gear on output shaft	1	1
110	108072	washer 0 18	1	1	136	119037	Ring R 34 x 46 x 8 UEN	1	1
111	108092	Securing washer	1	1	137	118978	5th gear on output shaft Gang AW (H)	1	1
112	108279	Clutch lever	1	1	138	108243	Thrust washer 18 x 27 x 1	nB	nB
113	108283	Clutch return spring	1	1	139	118644	thrust washer 18 x 27 x 0,8	nB	nB
114	118971	Main shaft (H)	1	1	140	119034	Ball bearing 3205 C3 DIN 628	1	1
115	108079	Needle cage X 32 x.26 x 10	1	1	142	106305	Securing ring 5 52 x 2 DIN 472	1	1
116	108638	2nd gear on vain shaft	1	1	143	108247	Needle cage Iko RNA49/14 Needle Bearing 18x26x13	2	2
117	108619	Washer 22 x 28 x 1	2	2	144	119035	Spacer tube on output shaft AW	1	1
118	118973	3rd gear on coin shaft 11W (H)	1	1	145	108250	Sprocket Z 13	nB	nB
119	108310	Washer 21,5 x 31,5 x 1	3	3	108251	108251	Sprocket Z 14	nB	nB
120	118974	4th gear on pain shaft	1	1	108252	108252	Sprocket z 15	nB	nB
121	108313	Needle cage K 25 x 29 x 13	2	2	108253	108253	Sprocket 2 16	nB	nB
122	118972	5th gear on main shaft	1	1	146	101879	Securing ring A 25x1,2 DIN 471	1	1
123	108233	Circlip SW 21	1	1	147	108126	Ball bearing 6204 2 C 3 DIN 625	1	1
124	108312	Inner ring	2	2	148	108266	Needle cage K 18 x 22 x 10	1	1
125	108235	Securing ring A 21 x 1,2 DIN 471	5	5	155	108185	Gear change lever complete	1	1
126	108253	Washer PS 18 x 25 x 1 DIN 988	1	1	156	106588	Flat head screw	1	1
127	108624	Output shaft (H)	1	1	157	106589	Spring	1	1
128	108626	Needle cage X 22 x 26 x 13	1	1	158	106590	Rubber pedal	1	1
129	118979	1st gear on output uhaft	1	1	159	101569	Hexagon acres M 6 x 20 DIN 933	1	1
130	108311	Washer 18 x 24 x 1	1	1	160	101510	Spring ring 8 6 DIN 128	1	1
131	108640	2nd gear on output shaft	1	1	161	118981	Shifting drum	1	1



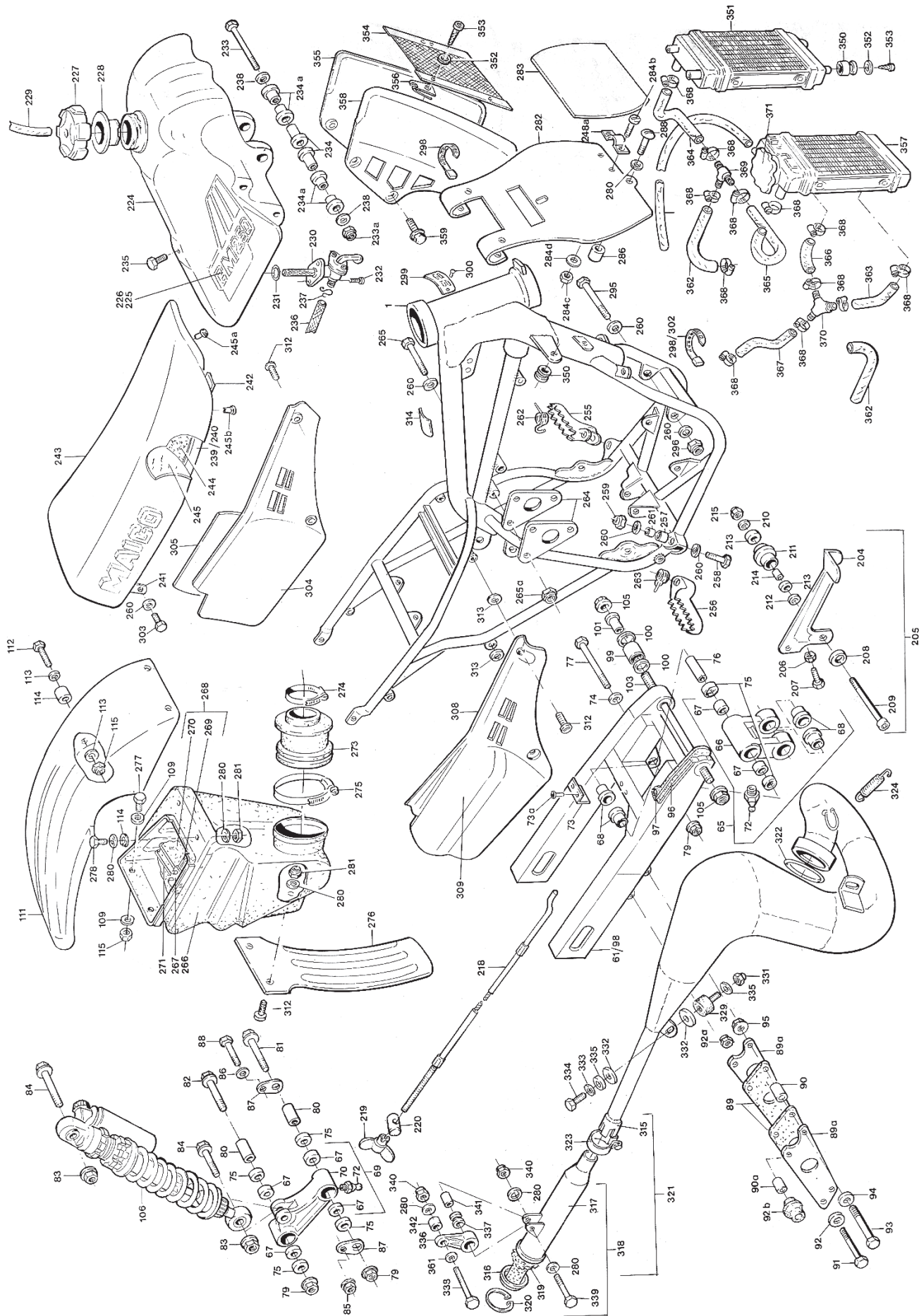
**1985 Engine**

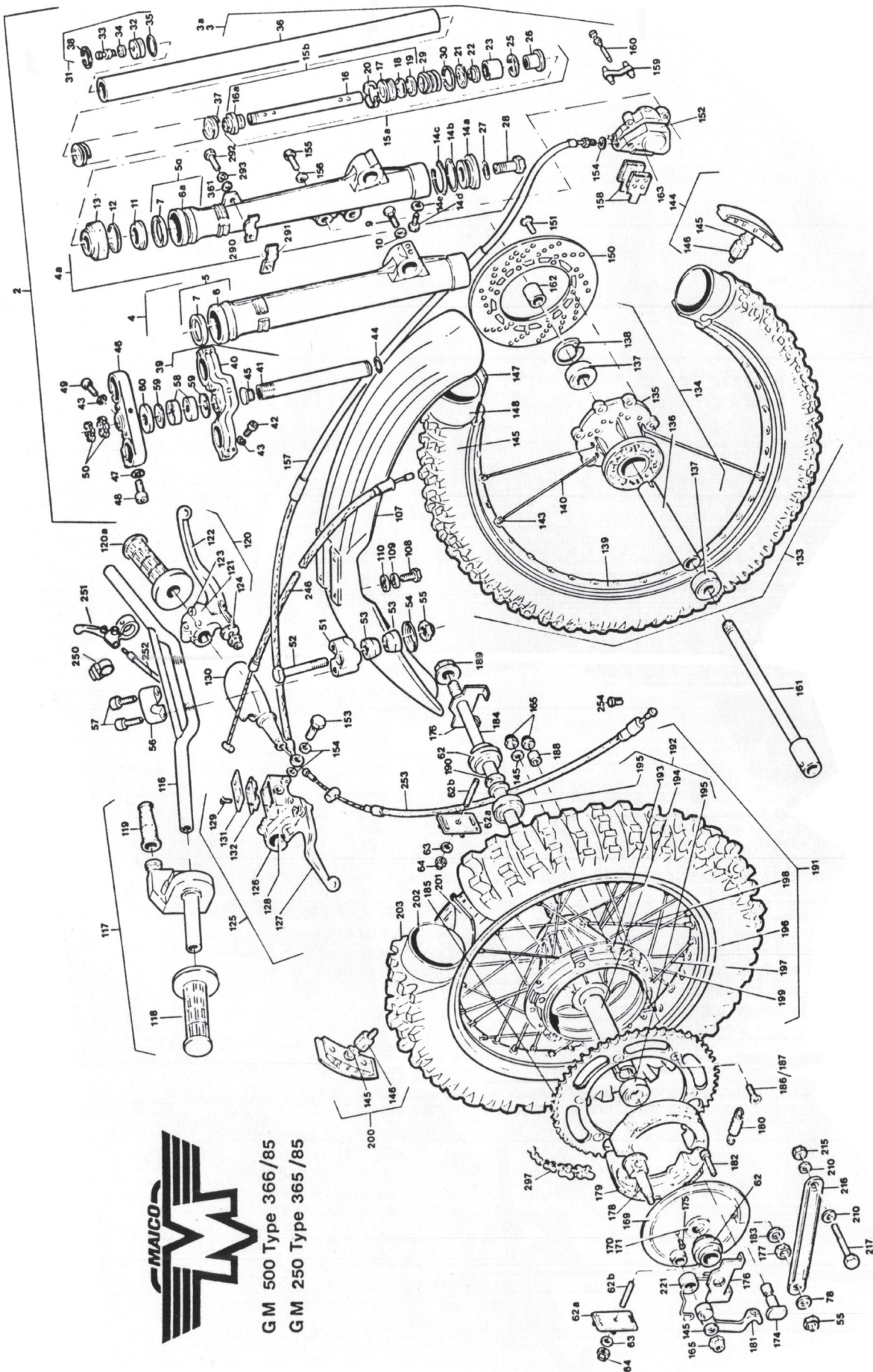
Picture No.	Part No.	Description	GM 250	GM 500	Picture No.	Part No.	Description	GM 250	GM 500
163	118982	Shifting drum	1	1	189a	106089	Washer 12,5 x 24,1 x 1,3	nB	nB
165	108194	Stud	1	1	190	108808	Kickstarter lever only	1	1
166	119067	Shift shaft segment	1	1	191	108164	Kickstarter Joint	1	1
167	119055	Washer 10 x 15 x 1 DIN 988	1	1	192	101874	Ball Ø 7 DIN 5401	1	1
168	101438	Securing ring A 12 x 1 DIN 571	1	1	193	103867	Pressure spring for kickstarter	1	1
169	101421	Washer 12 x 18 x 1 DIN 988	1	1	194	108165	Screw	1	1
170	108195	Return spring	1	1	195	100656	Rubber pedal	1	1
171	119031	Shifting crank	1	1	196	119033	Idle gear on kickstarter	1	1
172	118983	Shirting cam	2	2	197	108266	Needle cage K 18 x 22 x 10	1	1
174	108199	Washer	1	1	198	103723	Washer 1st gear	1	1
175	118980	Pressure spring	2	2	199	108267	Kickstarter shaft	1	1
176	108201	Shift fork spindle	2	2	201	108171	Ratchet gear	1	1
177	108214	Shifting fork AW	2	2	202	108172	Pressure spring for kickstarter gear	1	1
178	108633	Shifting fork NW	1	1	203	108173	Springcup	1	1
179	108204	Pin	1	1	204	108174	Kickstarter return spring	1	1
180	100410	Sealing ring A 14 x 18 D/N 7603	1	1	205	101427	Securing ring A 16 x 1 DIN 471	2	2
181	108205	Pressure spring	1	1	206	108235	Securing ring A 21 x 1,2 DIN 471	2	2
182	108206	Pin	1	1	207	108176	Thrust washer	3	3
183	108207	Shifting cam cover plate	1	1	208	108268	Securing ring A 18 x 1,2 DIN 471	1	1
184	119032	Stop plate	1	1	210	108160	Bearing bush	1	1
185	101404	Countersunk screw M 6 x 10 DIN 963	1	1	211	108269	Ratchet gear on kickstarter complete	1	1
186	101823	Countersunk screw M 6 x 80 DIN 963	1	1	212	108270	Ratchet gear on kick5tarter	1	1
187	108209	Securing plate	1	1	213	108177	Bearing bush	1	1
188	101439	Cylinder screw M 6 x 10 DIN 84	4	4	214	107599	Ignition system cpl. without coil	1	
189	108807	Kickstarter lever complete	1	1		103598	Ignition system cpl. without coil		1

**1985 Engine**

Picture No.	Part No.	Description	GM 250	GM 500	Picture No.	Part No.	Description	GM 250	GM 500
215	103600	Ignition coil	1	1	246	119139	Pull button	1	1
216	101881	Spring washer 3 x 3,7 DIN 6888	1	1	248	108600	Link stud	1	1
217	101123	Magneto nut	1	1	249	108601	O- ring seal 17 x 2	2	2
218	101630	Inner hexagon screw M 5 x 16 DIN 912	3	3	250	101633	Inner hexagon screw M 6 x 20 DIN 912	6	6
219	101731	Washer 8 5,3 DIN 125	3	3	251	108599	Intake flange	1	1
220	101567	Hexagon screw M 6 x 16 DIN 933	2	2	252	108669	Water pump shaft	1	1
221	101732	Washer B 6,4 DIN 125	4	4	253	108615	Ball bearing 12 x 21 x 5	2	2
222	101690	Securing nut NM 6 DIN 980	2	2	254	101865	Sealing ring AS 12 x 22 x 7	1	1
223	108689	Spark plug socket	1	1	255	108596	Sprocket for water pump	1	1
224	103530	Cable sleeve	1	1	256	101741	Washer A 5,3 DIN 9021	1	1
225	103576	Connector 6,3 - 1	1	1	257	108605	Inner hexagon screw M 5 x 10 DIN 912	1	1
226	103595	Connector 9,5 - 6	1	1	258	108597	Gasket for water pump	1	1
227	103596	Connocotor housing thin	1	1	259	108598	Water pump cover	1	1
228	103597	Connector housing wide	1	1					
229	100589	Ignition cable	x	x					
230	118984	Carburetor complete BING 54/38/121	1	1					
	119030	Carburetor complete BING 54/40/113	1	1					
232	100683	Clamp	1	1					
234	100449	Cupspring	1	1					
235	101542	Cylinder screw AM 6 x 55 DIN 84	1	1					
237	101550	Cylinder screw AM 6 x 30 DIN	3	3					
242	119138	Starter complete	1	1					
243	119137	Choke housing	1	1					
244	119136	Spring	1	1					
245	119135	Choke piston	1	1					







GM 500 Type 366/85  
GM 250 Type 365/85



**1985 Frame and Chassis**

Picture	Part	Description	GM	GM	Picture	Part	Description	GM	GM
No.	No.		250	500	No.	No.		250	500
1	118810	Frame	1	1	16	118825	Dampe tube	2	2
2	118837	Telescopic fore complete	1	1	16a	118826	Piston holder	2	2
3	118836	Fork leg complete right	1	1	17	116447	Damper piston	2	2
3a	118835	Fork leg complete left	1	1	18	106448	Washer 23,9 x 28,2 x 0.9	2	2
4	118823	Fork slider complete right	1	1	19	106449	Circlip SW 24	2	2
4a	119152	Fork slider complete left	1	1	20	106450	Piston ring	2	2
5	118821	Fork slider with bush, right	1	1	21	118829	Valve seat	2	2
5n	119153	Fork slider with bush, left	1	1	22	118832	Valve	2	2
6	118822	Fork slider only, right	1	1	23	118830	Valve insert	2	2
6a	119151	Fork slider only, left	1	1	25	106457	Securing ring 37 x 1,5	2	2
7	106436	Guide bush	2	2	26	118831	Bush for damper tube	2	2
9	101571	Hexagon screw M 6 x 30 DIN 931	2	2	27	108303	Sealing ring A 18 x 22	2	2
10	101510	Spring ring 8 6 DIN 128	2	2	28	118816	Screw for damper	2	2
11	106439	Stealing ring for fork	2	2	29	118828	Counter spring	2	2
12	106440	Circlip SB 55 x 1,5	2	2	30	106428	Circlip SB 38	2	2
13	106828	Fork wiper	2	2	31	106429	Plug complete	2	2
14a	118814	Cover lid	2	2	32	106431	Plug	2	2
14b	118815	O-Ring 36.17 x 2,62	2	2	33	102184	Valve complete	2	2
14c	118818	Securing ring SB 43	2	2	34	100277	Sealing ring A 8 x 11.5	2	2
14d	118819	Cylinder screw M 5 x 8 DIN 84	2	2	35	106464	O-Ring 29,74 x 3,53	2	2
14o	118820	Sealing ring A 5 x 7,5' DIN 7603	2	2	36	118833	Main tube	2	2
150	118827	Damper complete	2	2	37	118834	Fork opring	2	2
15b	118824	Damper tube, complete	2	2	38	106457	Securing ring 37 x 1.5 DIN 472	2	2

**1985 Frame and Chassis**

Picture No.	Part No.	Description	GM 250	GM 500	Picture No.	Part No.	Description	GM 250	GM 500
39	107473	Lower scows head complete	1	1	62	118844	Chain tenasoner	2	2
40	106640	Lower cross head	1	1	62a	118842	Cover	2	2
41	107483	Steering tube	1	1	62b	118843	Thread pin M 8 x 65	2	2
42	101649	Inner hexagon screw M 8x45 DIN 912	4	4	63	101734	Washer B 8.4 DIN 125	4	4
43	101511	Spring ring B 8 DIN 128	5	5	64	101692	Securing nut NM 8 DIN 980	3	3
44	107484	Circlip SW 27	1	1	65	118845	JDINT fork cpl.	1	1
45	107490	Plastic plug	1	1	66	118846	JDINT fork	1	1
46	107474	Upper cross head	1	1	67	118847	Bush 18 x 20 x 15	6	6
47	101512	Spring. ring B 10 DIN 128	2	2	68	118848	Bush	4	4
48	103270	Inner hexagon screw M 10 x 40	2	2	69	118849	Toggle arm. cpl.	1	1
49	101648	Inner hexagon screw M 8 x 40	1	1	70	118850	Toggle arm	1	1
50	106474	Steering head nut	2	2	72	107850	Nipple	3	3
51	106479	Lower handle bar clamp	2	2	73	107968	Stiffening plate	1	1
52	101619	Hexagon screw M 10x 55	2	2	73a	119052	Blind rivet 0 4 x 10	2	2
53	106806	Rubber buffer	4	4	74	101737	Washer B 13 DIN 125	1	1
5a	106642	Washer	2	2	75	108175	Sealing ring SD 18 x 24 x 3	6	6
55	101693	Securing nut NM 10 DIN 980	2	2	76	118852	Spacer bush 18 x 3 x 81	1	1
56	106478	Upper handle bar clamp	2	2	77	118853	Screw M 12 x 137	1	1
57	101629	Inner hexagon screw M 8 x 30	4	4	78	101735	Washer B 10.5 DIN 125	3	3
58	103297	Roller bearing	2	2	79	118854	Flange nut M 12	3	3
59	103296	Nilos ring	2	2	80	118855	Spacer bush 18 x 3 x 39	2	2
60	106480	Cover plate	1	1	81	118857	Screw M 12 x 68	1	1
61	118840	Rear wheel swing arm	1	1	82	118856	Screw M 12 x 100	1	1

**1985 Frame and Chassis**

Picture	Part	Description	GM	GM	Picture	Part	Description	GM	GM
No.	No.		250	500	No.	No.		250	500
83	118859	Flange nut M 10	1	1	103	118865	Spindle	1	1
84	118858	Screw M 10 x 50	1	1	105	108614	Flange nut M 14 x 1,5	2	2
85	108804	Flange nut M 8	1	1	106	118863	Rear shock Ohlins "Piggy Pack"	1	1
86	101734	Washer B 8,4 DIN 125	1	1	107	108657	Front fender	1	1
87	118866	Supporting loop	2	2	108	101570	Hexagon screw M 6 x 25 DIN 933	4	4
88	101600	Hexagon screw M 8 x 65 DIN 931	1	1	109	101750	Washer	4	4
89	108514	Plastic plate for chain guide	2	2	110	102708	Rubber washer	4	4
89a	108493	Plate for chain guide	2	2	111	118868	Rear fender	1	1
90	108516	Spacer bush	2	2	112	101570	Hexagon screw M 6 x 25 DIN 933	4	4
90a	108515	Spacer bush	2	2	113	101732	Washer	8	8
91	101580	Hexagon screw M 6 x 45 DIN 933	2	2	114	105029	Spacer bush	4	4
92	101732	Washer B 6,4	2	2	115	101690	Flange nut M 6 DIN 980	4	4
92a	101690	Securing nut M 6 DIN 980	2	2	116	106668	Handle bar	1	1
92b	101937	Roller for chain guide	2	2	117	108521	Throttle grip, col.	1	1
93	101597	Hexagon screw	1	1	118	107893	Grip cover	1	1
94	101734	Washer	2	2	119	107891	Rubber cap	1	1
95	101692	Securing nut	1	1	120	108522	Clutch lever. cpl.	1	1
96	118860	Protection plate	1	1	120a	107892	Grip	1	1
97	119079	Screw 8 4.8 x 13	2	2	121	102213	Hinge for clutch lever	1	1
98	118861	Rear wheel swing arm with bearings	1	1	122	102216	Clutch lever	1	1
99	103932	Needle bush HK 2030	2	2	123	100133	Lever screw with nut	2	2
100	101930	O - ring	4	4	124	100212	Ad-dusting screw with nut	2	2
101	118862	Bush for rear wheel swing arm	2	2	125	118870	Pump cpl.	1	1

**1985 Frame and Chassis**

Picture No.	Part No.	Description	GM 250	GM 500	Picture No.	Part No.	Description	GM 250	GM 500
126	119172	clamp	1	1	151	118888	Counter sunk screw M 6 x 16 DIN 7991	6	6
127	118872	Hand brake lever only	1	1	152	118891	Caliper	1	1
128	119173	Pump housing	1	1	153	118892	Hollow screw M 10 x 1	1	1
129	101792	Countersunk screw M 5 x 15	2	2	154	106459	Sealing ring A 10 x 1.5	3	3
130	107891	Lever cover	1	1	155	101593	Hexagon screw M 8 x 35 DIN 931	2	2
131	119174	Pump cover	1	1	156	101714	Spring Washer B 8 DIN 137	2	2
132	119175	Rubber gaaket for pump	1	1	157	118893	Brake hose	1	1
133	118882	Front wheel, only	1	1	158	119072	Brake pad	1	1
134	118878	Front wheel hub with bearing	1	1	159	119074	Clip	1	1
135	118879	Front wheel hub. only	1	1	160	119073	Securing pin	1	1
136	118881	Spacer tube for front wheel	1	1	161	119150	Front axle	1	1
137	103244	8a11 bearing 62032RS	1	1	162	118889	Spacer bush	1	1
138	101850	Securing ring	1	1	163	119076	Cover plate	1	1
139	118883	Rim 21 .	1	1	165	101692	Securing nut M 8	1	1
140	118884	Spoke M 4,5	36	36	169	118904	Brake plate	1	1
143	102408	Niople M 4,5	36	36	170	118905	Spacer bush for brake plate	1	1
144	107960	Tire holder cpl. with nut and washer	1	1	171	118906	Spacer bush for brake plate	1	1
145	101734	Washer B 8,4 DIN 125	6	6	172	103187	Brake plate rear only	1	1
146	100289	Nut for tire holder	2	2	173	103188	Cover plate	1	1
147	102001	Tire flap 21 "	1	1	174	103189	Pivot bolt	1	1
148	102002	Hose 3.00 - 21 "	1	1	175	101901	Oval head nail Ø 3 x 8 DIN 1476	1	1
149	119062	Tire 3.00 - 21 " Bridgestone M 23	1	1	176	118902	Cover plate	2	2
150	118887	Brake disc	1	1	177	101674	Hexagon nut M 10 DIN 934	1	1

**1985 Frame and Chassis**

Picture No.	Part No.	Description	GM 250	GM 500	Picture No.	Part No.	Description	GM 250	GM 500
178	118907	Brake toggle	1	1	199	102408	Nipple	36	36
179	100188	Brake shoe	2	2	200	107909	Tire holder cpl. with nut and washer	1	1
180	101323	Tension spring	2	2	201	102005	Tire flap	1	1
181	103190	Brake lever for rear hub	1	1	202	102015	Hose 4.00/4.50 x 18 "	1	-
182	103270	Inner hexagon screw M 10 x 40 x 32	1	1	119168		Hose 4.25/150/80 x 18 "	-	1
183	101715	Spring Washer B 10 DIN 137	1	1	203	119061	Tire 5.10 x 18 Bridgestone M 22	-	1
184	118900	Rear Axle	1	1	119060		Tire 4.10 x 18 Bridgestone M 22	1	-
185	107886	Sprocket 52 Z	nB	nB	204	118911	foot brake lever, welded	1	1
	107887	Sprocket 54 2	nB	nB	205	118912	Foot brake lever, cpl.	1	1
	107888	Sprocket 50 2	nB	nB	206	101667	Hexagon nut M 6 DIN 934	1	1
186	101880	Countersunk screw inner M 8 . 50	3	3	207	107916	Hexagon screw M 6 x 30 DIN 933	1	1
187	101803	Countersunk screw inner hex M 8 . 40	3	3	208	118913	Flange bush	1	1
188	106696	Spacer bush	3	3	209	119064	Inner hexagon screw M 8 x 90 DIN 6912	1	1
189	118901	Flange nut M 20 x 1.5	2	2	210	101734	Washer B 8,4 DIN 125	2	2
190	118903	Spacer bush	1	1	211	107991	Roller	1	1
191	118898	Rear wheel. only	1	1	212	107996	Spacer washer	1	1
192	118895	Rear wheel hub, only	1	1	213	107993	Ball bearing 608 2 RS DIN 625	2	2
193	106689	Rear wheel hub only	1	1	214	107992	Spacer bush	1	1
194	118896	Spacer tube, rear	1	1	215	101692	Securing nut NM 8 DIN 980	2	2
195	118897	Ball bearing 62042RSC3	2	2	216	119068	Brake axle rear	1	1
196	107899	Rim 18 "	1	1	217	101600	Hexagon screw M 8 x 65 DIN 933	1	1
197	107397	Spoke ED 4.5 x 4 x 165	18	18	218	118914	Brake cable for rear brake	1	1
198	107398	Spoke ED 4,5 x 4 x 211	18	18	219	100243	Nut	1	1



**1985 Frame and Chassis**

Picture No.	Part No.	Description	GM 250	GM 500	Picture No.	Part No.	Description	GM 250	GM 500
220	100244	Nipple holder	1	1	242	106751	Clamp molder	1	1
221	107922	Brake laver spring	1	1	243	118924	Seat. cpl.	1	1
222	100406	Hose Ø 7 x 2	x	x	244	118927	Seat padding low	1	1
224	118915	Tank	1	1		118929	Seat padding (high)	nB	nB
225	118916	Tank decal left	1	1	245	118928	Seat cover	1	1
226	118917	Tank decal right	1	1	245a	107940	Blind rivet Ø 4,8 x 10,5	9	2
227	106515	Tank cap cpl.	1	1	245b	118930	Blind rivet Ø 4 x 9,5	2	2
228	106516	Cover gasket	1	1	246	107954	Gas throttle	1	1
229	106517	Hose	1	1	250	102220	Kill button	-	1
230	106509	Gas tap	1	1	251	107889	Decompressor, cpl.	-	1
231	106510	0 - ring	1	1	252	100315	Decompressor cable	-	1
232	101498	Screw 8 5,5 x 18	2	2	253	107950	Clutch cable	1	1
233	118918	Hexagon screw M 6 x 110 DIN 931	1	1	254	107951	Nipple holder	1	1
233a	101690	Securing nut M 6 DIN 980	1	1	255	118932	Foot rest left	1	1
234	118919	Spacer bush	2	2	256	118933	Foot rest right	1	1
234a	108603	Rubber bush	2	2	257	106738	Bearing bush	2	2
235	101564	Hexagon screw M 6 x 10 DIN 933	1	1	258	101597	Hexagon screw M 8 x 55 DIN 931	2	2
236	100406	Hose Ø 7 x 2	x	x	259	101692	Securing nut M 8 DIN 980	6	6
237	102832	Hose clap	2	2	260	101734	Washer B 8,4 DIN 125	16	16
238	101750	Washer B 6.4 DIN 9021	2	2	261	106750	Spacer bush	2	2
239	118923	Seat base. cpl.	1	1	262	118934	Foot rest spring left	1	1
240	118925	Seat base. only	1	1	263	118935	Foot rest spring right	1	1
241	118926	Seat bracket	1	1	264	107935	Supporting plate for cylinder head	2	2

**1985 Frame and Chassis**

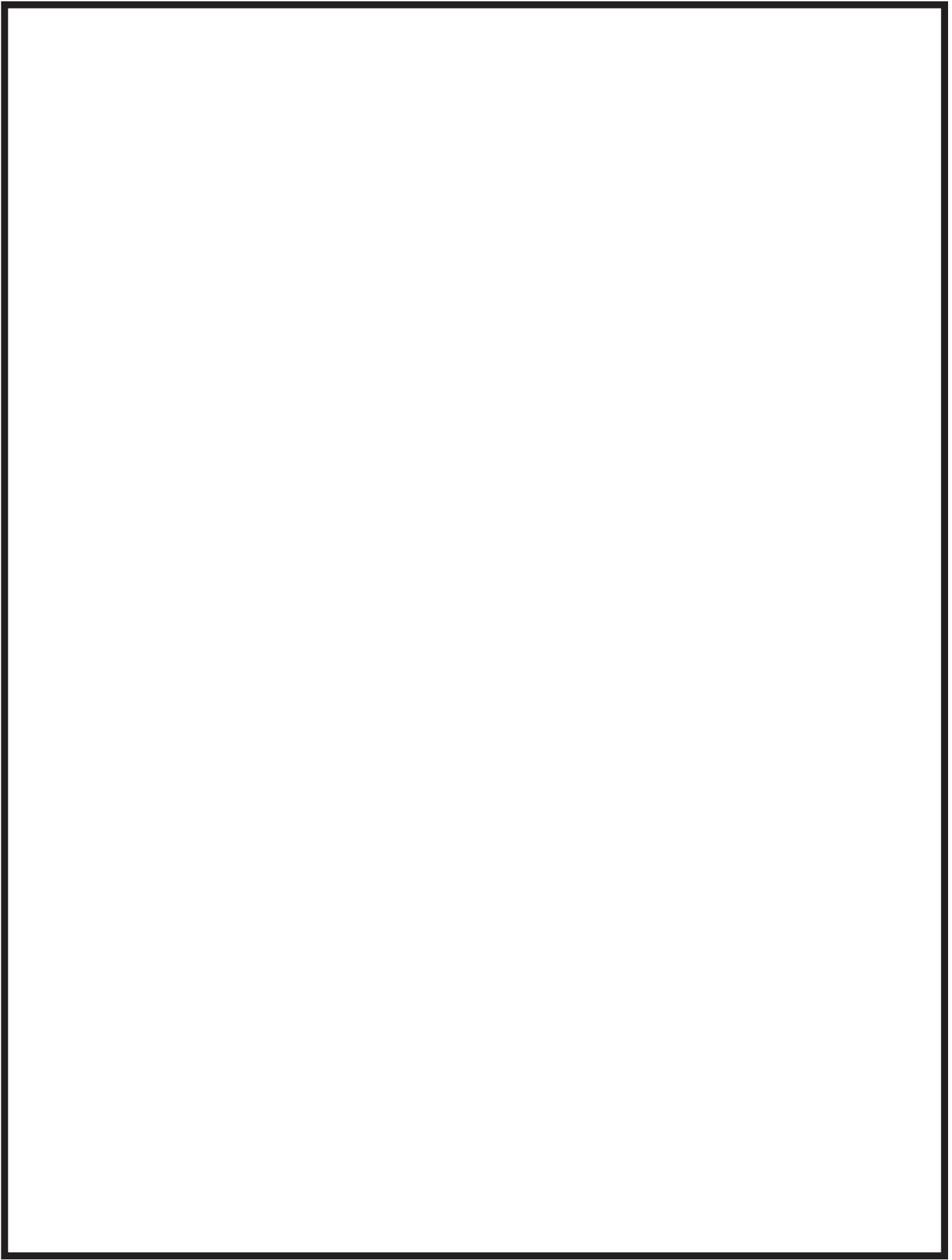
Picture	Part	Description	GM	GM	Picture	Part	Description	GM	GM
No.	No.		250	500	No.	No.		250	500
265	101597	Hexagon screw M 8 x 55 DIN 931	3	3	284d	101742	Washer B 4,3 DIN 9021	2	2
265a	108804	Flange nut M 8	3	3	286	105029	Spacer bush	2	2
266	118946	Air filter box	1	1	288	103711	Plastic screw M 6 x 22	4	4
267	107968	Clamp	1	1	289	118938	Brake cable holder, cpl.	1	1
268	107434	Filter element cpl.	1	1	290	106256	Clamp plate	1	1
269	107435	Filter cage	1	1	291	106255	Clamp plate. cpl.	1	1
270	107436	Air filter foam	1	1	292	101568	Hexagon screw M 6 x 18 DIN 933	1	1
271	107437	Holding wire cpl.	1	1	293	101704	Spring ring B 6 DIN 127	1	1
273	118937	Intake flange	1	1	294	106254	Set Motormount bolts	1	1
274	100683	Clamp	1	1	295	119069	Hexagon screw M 8 x 115 DIN 931	2	2
275	107451	Clamp	1	1	296	101700	Securing nut NM 8 DIN 980	2	2
276	107988	Splash guard	1	1	297	108544	Chain with lock 5/8" x 1/4' 116	1	1
277	107916	Hexagon screw M 6 x 30 DIN 933	2	2	298	100325	Rubber cable clip	8	8
278	101570	Hexagon screw A 6 x 25 DIN 933	2	2	299	108559	Identification plate	1	1
279	118944	Screw M 6 x 14 DIN 58450	2	2	300	101900	Oval head nail 2 x 4 DIN 1476	2	2
280	101750	Washer B 6,4 DIN 9021	10	10	302	106760	Rubber cable clip 3,6 x 277	2	2
281	101690	Securing nut NM 6 DIN 980	6	6	303	101587	Hexagon screw M 8 x 16 DIN 933	2	2
282	107444	Front number plate	1	1	364	118940	Side panel left	1	1
283	107975	Front decal green	1	-	305	118942	Decal left green	1	-
	107983	Front decal yellow	-	1		118993	Decal left yellow	-	1
284a	119066	Guide plate	1	1	308	118941	Side panel right	1	1
284b	101528	Cylinder screw M 4 x 16 DIN 84	2	2	309	118943	Decal right green	1	-
284c	101719	Securing nut M 4 DIN 980	2	2		118994	Decal right yellow	-	1

**1985 Frame and Chassis**

Picture	Part	Description	GM	GM	Picture	Part	Description	GM	GM
No.	No.		250	500	No.	No.		250	500
312	118944	Screw M 6 x 14 DIN 58450	4	4	335	101750	Washer B 6,4 DIN 9021	5	5
313	102708	Rubber washer	4	4	336	108780	Bush for silencer	1	1
314	118920	Rubber for tank	2	2	337	108781	Rubber bloc	1	1
315	118953	Exhaust welded	1	-	338	101580	Hexagon screw H 6 x 45 DIN 933	1	1
	118999	Exhaust welded	-	1	339	101571	Hexagon screw H 6 x 30 DIN 931	1	1
316	108357	Tail pipe soldered	1	-	340	101690	Securing nut m 6 DIN 980	3	3
	108380	Tail pipe soldered	-	1	341	108782	Spicer bush	1	1
317	118948	Silencer welded	1	-	342	118947	Spacer bush (Ap)	1	1
	118996	Silencer welded	-	1	350	108580	Rubber bush	4	4
318	118951	Silencer cpl.	1	-	351	108581	Radiator left	1	1
	118997	Silencer cpi.	-	1	352	108583	Washer	4	4
319	106864	Exhaust packing	1	-	353	103738	Screw 8 4,8 x 13 DIN 7981	8	8
	106851	Exhaust packing	-	1	354	118986	Guard	2	2
320	108368	Circlip	1	1	355	118987	Protector left	1	1
321	118952	Exhaust system cpl.	1	-	356	118988	Nut for radiator	4	4
	118998	Exhaust system cpl.	-	1	357	108586	Radiator	1	1
322	118954	O - ring	1	1	358	118989	Protector	1	1
323	105474	Clamp	1	1	359	101498	Screw 8 5,5 x18	4	4
324	106866	Tension spring	2	-	360	101525	Hexagon screw M 6 x 14 DIN 933	2	2
329	101166	Silent bloc for exhaust	2	2	361	101732	Washer B 6.4 DIN 125	6	6
330	101732	Washer B 6,4 DIN 125	2	2	362	108593	Pressure tube	2	2
331	101690	Securing nut NM 6 DIN 980	2	2	363	108594	Rubber tube	1	1
332	105430	Washer	4	4	364	108714	Condition tube. left	1	1
333	101510	Spring rino	2	2	365	108715	Condition tube, left	1	1
334	101525	Hexagon screw M 6 x 14 DIN 933	2	2	366	108716	Intake tube, left	1	1

**1985 Frame and Chassis**

Picture	Part	Description	GM	GM	Picture	Part	Description	GM	GM
No.	No.		250	500	No.	No.		250	500
367	108717	Intake tube, water pump	1	1					
368	106130	Clamp	14	14					
369	108662	T - piece TS 19	1	1					
370	108663	Y - piece YS 19	1	1					
371	119176	Radiator cover	1	1					
372	10101	Lower Shock Bearing - Ohlins	1	1					
373	8513	Chain Guide Complete	1	1					



**1985 Enduro Supplemental Parts**

Part No.	Description	GME 250	GME 500	Part No.	Description	GME 250	GME 500
119101	Brake hose	1	1	108732	Blinkerholder right	1	1
119099	Stick axle front GS	1	1	108733	Piece for blinker holder	2	2
119060	Tyre 4.10 x 18 Bridgestone	1	1	101659	Hexagon screw	2	2
107327	Sprocket z 48	-	1	108734	Ignition lock	1	1
108726	Headlight complete	1	1	108735	Rubber cap	1	1
105634	Bulb 6V 21/5W	1	1	108736	Cap for ignition lock	1	1
107389	Light exit, rear	1	1	108737	Blink regulation	1	1
107390	Light holder, rear	1	1	105070	Switch for brake light complete	1	1
119103	Rear light housing	1	1	105640	Rubber Cap	1	1
119104	Spacer lever complete	1	1	108738	Direct current horn	1	1
119105	Main cable set	1	1	119106	Bush	2	2
108727	Blinking light	4	4	100325	Cable binder	15	15
108728	Rubber holder	4	4	103891	Roller	1	1
108729	Ball bulb	4	4	119149	Horn holder	1	1
108730	Cable	4	4	108741	Headlight housing	1	1
105639	Spacer ring	2	2	108742	Cylinder screw B 4,2 x 32	1	1
101735	Washer A 10.5	4	4	108743	Tin nut	1	1
101676	Nut flat M 8	4	4	108744	Spring	1	1
101512	Spring ring	4	4	108747	Screw	1	1
108731	Blinkerholder left	1	1	107756	Rubber	4	4

**1985 Enduro Supplemental Parts**

Part No.	Description	GME 250	GME 500	Part No.	Description	GME 250	GME 500
100683	Hose clamp	2	2	107667	End cap	1	1
118804	Flange M 8	1	1	119080	Exhaust welded	1	-
119109	Filter case cover GS	1	1	119082	Exhaust welded	-	1
107314	Seat foam	2	2	119058	Speedometer complete	1	1
119111	filter case cover	1	1	119056	Speedometer spindle	1	1
108750	Reducer flange	1	1	107715	Speedometer console	1	1
106744	Chain 114 links	1	1	107336	Spacer	4	4
119140	Decal for protector lefthand	1	1	103263	Damper holder complete	1	1
119141	Decal for protector righthand	1	1	101649	Hexagon screw M 8 x 45	4	4
106759	Rubber ribbon	1	1	119114	Protector cap	1	1
107777	Steering lock	1	1	101735	Washer A 10,5	1	1
101601	Hexagon screw M 8 x 70	-	1	119134	washer 10,5	1	1
101596	Hexagon screw M 8 x 50	1	-	107708	Leading bow complete	1	1
101875	Securing ring B 8 x 3 DIN 472	1	1	119116	Hub drive complete worked out	1	1
101897	Securing ring 32 x 1.5 DIN 471	1	1	119117	Spacer for hub drive	1	1
119154	Noise damper, welded	1	1	119118	Middle mount welded	1	1
119155	Tube welded	1	1	106179	Turn back hook, complete	1	1
107664	Plate	1	1	100388	Rubber ring	2	2
107665	Damper cartridge	1	1	108762	Roller	2	2
107666	Cover plate	1	1	101838	Securing washer	3	3



**1985 Enduro Supplemental Parts**

Part No.	Description	GME 250	GME 500	Part No.	Description	GME 250	GME 500
100386	Spring mount	2	2				
108763	Spacer tube for middle mount	2	2				
101592	Hexagon screw M 8 x 30	2	2				
101734	Washer B 8,4 Sicherungsnutter	2	2				
101700	Securing nut M 8	2	2				
119146	Gear main shaft	1	1				
108622	Sprocket 2nd gear on mainshaft	1	1				
108625	2nd gear on output shaft AW (E)	1	1				
119148	1st gear on output shaft AW (HE)	1	1				
108253	Sprocket Z 16	1	1				
101545	Cylinder screw M 6 x 80	-	1				
108746	Sprocket cover	1	1				
108747	Spacer	3	3				
101500	Hexagon screw M 6 x 40	3	3				
119125	Ignition system complete	1	1				
101529	Cylinder screw M 5 x 10	3	3				
101711	Spring washer B 5	3	3				
100600	Water protection cap	1	1				
101126	Spark plug	1	1				
119144	Carburetor complete	-	1				